



**An ILPQC Statewide Neonatal Initiative: Equity and Safe Sleep for Infants (ESSI)**

Alana Rivera, MSN, RNC-OB, C-EFM, CLC  
Ellie Suse, MSN, MPH, RN

1

---

---

---

---

---

---

---

---

**Objectives for this Session:**

<b>Recognize</b>	Recognize the racial/ethnic disparities presented in the 2020 Illinois Infant Mortality Report.
<b>Describe</b>	Describe the importance of neonatal equity work to address the leading causes of infant death, specifically sudden unexpected infant death (SUID).
<b>Apply and Promote</b>	Apply and promote neonatal equity strategies when improving the quality of neonatal health in Illinois through statewide quality improvement work.

Illinois Perinatal Quality Collaborative 2

2

---

---

---

---

---


---

---

---

**Overview**

- Defining the problem
- ILPQC Background
- ESSI Aims and Drivers
- ESSI Toolkit
- ESSI Data Forms
- 10 Steps to getting started
- Next Steps



3

---

---

---

---

---

---

---

---

**Defining the Problem**



4

---

---

---


---

---

---

---

---



**Insight from CDC, HRSA, and IDPH  
Infant Mortality Reports**

---

A Case for the Next ILPQC Neonatal Initiative

5

---

---

---

---

---

---

---

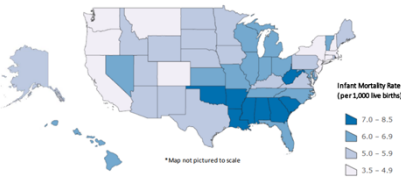
---

**Infant Mortality in the US and Illinois**

- **US national infant mortality rate:**  
5.7 deaths per 1,000 live births
- **Illinois infant mortality rate:**  
6.5 deaths per 1,000 live births

Illinois ranked **36th**  
out of 50 states

Figure 1: Infant Mortality Rates Across the United States, 2018



\*Map not pictured to scale

6

---

---

---

---

---

---

---

---

### Infant Mortality



- Infant mortality from **Sudden Unexpected Infant Death (SUID)** is largely unchanged since 1999
- In Illinois, the SUID rate through 2015 was 88 per 100,000 live births.
- Infant death by **Accidental Suffocation and Strangulation in Bed (ASSB)** has increased **184%** since **1990**.



7

---

---

---

---

---

---

---

---

---

---

### US Infant Mortality by Race/Ethnicity

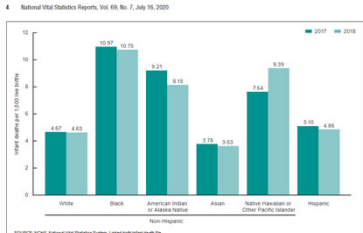


Figure 2. Infant mortality rates, by race and Hispanic origin: United States, 2017-2018

8

---

---

---

---

---

---

---

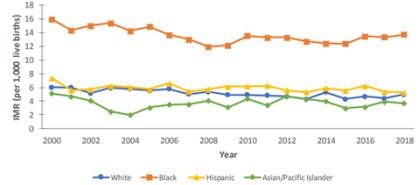
---

---

---

### Racial Disparities in Infant Mortality in Illinois

Figure 4: Trends in Infant Mortality Rate by Race/Ethnicity



"Illinois has long-standing racial disparities in infant mortality. Across all years during 2000-2018, Black infants had an infant mortality rate two to three times as high as White, Hispanic, and Asian/Pacific Islander infants"

Illinois Infant Mortality Report December 2020

9

---

---

---

---

---

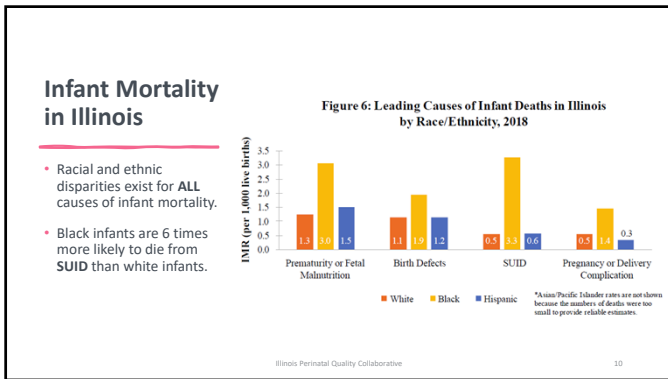
---

---

---

---

---



10

---

---

---

---

---

---

---

---

---

---

### ILPQC Birth Equity Initiative

The Illinois Perinatal Quality Collaborative (ILPQC) implements improvement projects in birthing hospitals to ensure high-quality care for pregnant women and infants. In 2021, the Birth Equity Initiative was launched to promote equitable hospital maternity and newborn care.

2020 IDPH Illinois Infant Mortality Report

ILPQC Data System

Birth Equity - BE

3x Non-Hispanic Black women are about 3 times more likely than non-Hispanic white women to die during or within a year of pregnancy from a related complication.

2-3x Compared to non-Hispanic white women, other racial and ethnic groups have higher rates of severe complications during pregnancy and in the year postpartum.

Illinois Perinatal Quality Collaborative 11

11

---

---

---

---

---

---

---

---

---

---

### ILPQC Background

Who and What is the Illinois Perinatal Quality Collaborative?

Illinois Perinatal Quality Collaborative

12

---

---

---

---

---

---

---

---

---

---

### Illinois Perinatal Quality Collaborative (ILPQC)

Statewide network of hospital teams, perinatal clinicians, patients, community partners, and public health leaders.

Committed to equitably improving outcomes and reducing disparities for birthing people and newborns in Illinois.



13

---

---

---

---

---

---

---

---

---

---

### ILPQC Central Team





**Ann Borders, MD, MSc, MPH:**  
Executive Director, OB Lead



**Leslie Caldarelli, MD:**  
Neonatal Co-Lead



**Justin Josephsen, MD:**  
Neonatal Co-Lead



**Patricia Lee King, PhD, MSW:** State Project Director, Quality Lead



**Alana Rivera, MSN, RNC-OB, C-EFM, CLC:**  
Nurse Quality Manager



**Ellie Suse, MPH, BSN, RN:**  
Project Manager



**Aleena Sureman, MPH:**  
Project Coordinator

14

---

---

---

---

---

---

---

---

---

---



15

---

---

---

---

---

---

---

---

---

---

### ILPQC: Making Change Happen

**ENGAGE**

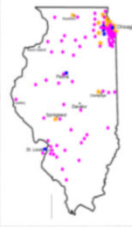
Engage hospitals to create an environment of improvement

**MOTIVATE**


Motivate hospital teams to facilitate change at their hospital

**SUPPORT**

Support hospital teams through collaborative learning, rapid-response data, & QI support



TO ACHIEVE INITIATIVE GOALS AND EQUITABLY IMPROVE OUTCOMES AND REDUCE DISPARITIES FOR BIRTHING PEOPLE AND THEIR NEWBORNS



16

---

---

---

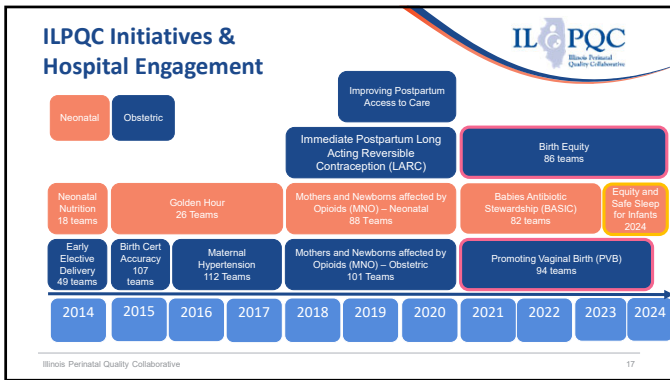
---

---

---

---

---



17

---

---

---

---

---


---

---

---

### The Next ILPQC Neonatal Initiative, ESSI

The layout



18

---

---

---

---


---

---

---

---

**ESSI Initiative Aims**



- By December 2025, greater than 70% of Illinois birthing and children's hospitals will address disparities and promote neonatal equity by actively participating in the ESSI initiative.
- By December 2025, greater than 80% of infants will be discharged from ILPQC hospitals with a completed ESSI Bundle

- AWARENESS** Parents or caregivers report an understanding of a safe sleep environment.
- READINESS** Social Determinants of Health (SDoH) screening and linkage to appropriate resources for safe transition to home.
- TRANSFER OF CARE** ESSI Newborn Care Plan documented in the discharge summary.

Illinois Perinatal Quality Collaborative 19

19

---

---

---

---

---

---

---

---

---

---

**ESSI Initiative Vision**



ILPQC has an opportunity to prevent infant deaths and reduce racial disparities through a quality framework. ESSI will address infant safe sleep environment, racial equity, social determinants of health, and other contributing factors.

The goal of the ESSI initiative is to better equip hospitals to address the issues that contribute to these disparities in infant mortality.

**Let's get started!**

20

20

---

---

---

---

---

---


---

---

---

---

**ESSI Initiative Development timeline**



**Fall 2022** Understanding the problem at ILPQC Annual Conference Meeting

**Spring 2023** Aims, Measures, and Key Driver Diagram development

**Fall 2023** Toolkit development with Neonatal CAB and ESSI Planning Group

**Winter 2022/23** ESSI Planning Group and Neonatal CAB form

**Summer 2023** Data form development and Wave 1 review

**Now** ESSI Launch at the 2023 Annual Conference

Illinois Perinatal Quality Collaborative 21

21

---

---

---

---

---

---

---

---

---

---

### ESSI Collaborations

**Neonatal Community Advisory Board**

Community partners representing diverse perspectives from around the state who meet regularly with ILPQC to collaborate on current and future QI projects

**ESSI Planning Group**

Neonatologists, pediatricians, family practice providers, nurses, doulas, public health and QI professionals, representing diverse perspectives from around the state who collaborate on the development and planning of the ESSI initiative

---

---

---

---

---

---

---

---

22

### ESSI Collaborations

**Wave 1 Teams**

18 ILPQC hospital teams who volunteered to assist with the review of ESSI Hospital and Patient Level Data forms.

The Wave 1 ESSI QI Teams met and reviewed the data forms, then shared their feedback on specific questions and data collection strategies. ILPQC reviewed feedback and incorporated into the data forms.

---

---

---

---

---

---

---

---

23

### ESSI Key Driver Diagram and Toolkit

---

---

---

---

---

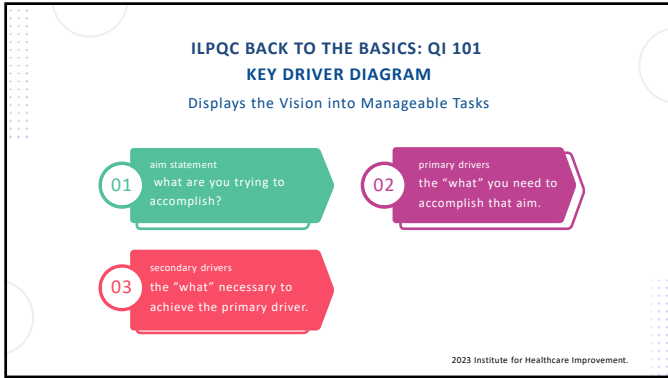
---

---

---

24





25

---

---

---

---

---

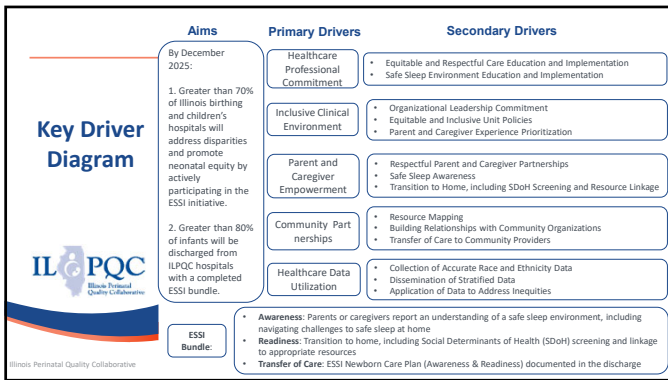
---

---

---

---

---



26

---

---

---

---

---

---

---

---

---

---



27

---

---

---

---

---

---

---

---

---

---

**ESSI Toolkit**

### National Guidelines and Position Statements

ILPQC gathered the guidelines and positions statements from American Academy of Pediatrics, Association of Women's Health, Obstetric and Neonatal Nurses, National Association of Neonatal Nurses that address equity and safe sleep

- AAP: Equity and Inclusion Efforts
- AAP: Sleep-Related Infant Deaths: Updated 2022 Recommendations for Reducing Infant Deaths in the Sleep Environment
- AWHONN: Diversity, Equity, and Inclusion at AWHONN
- NANN: Position Statement #3070: Racial Disparity in the NICU (2020)
- NANN: Position Statement #3075: Trauma-Informed Care in the NICU (2022)
- NANN: 9 Recommendations for Equality in Care

28

---

---

---

---

---

---

---

---

---

---

### ILPQC BACK TO THE BASICS: QI 101 KEY DRIVER DIAGRAM

Displays the Vision into Manageable Tasks

- 01 aim statement**  
what are you trying to accomplish?
- 02 primary drivers**  
the "what" you need to accomplish that aim.
- 03 secondary drivers**  
the "what" necessary to achieve the primary driver.
- 04 change ideas**  
the "how" needed to achieve the aim.

© 2023 Institute for Healthcare Improvement.

29

---

---

---

---

---

---

---

---

---

---

Aims	Primary Drivers	Secondary Drivers
<b>By December 2025:</b> 1. Greater than 70% of Illinois birthing and children's hospitals will address disparities and promote neonatal equity by actively participating in the ESSI initiative. 2. Greater than 80% of infants will be discharged from ILPQC hospitals with a completed ESSI bundle.	<b>1 Healthcare Professional Commitment</b> <ul style="list-style-type: none"> <li>Equitable and Respectful Care Education and Implementation</li> <li>Safe Sleep Environment Education and Implementation</li> </ul>	<ul style="list-style-type: none"> <li>Equitable and Respectful Care Education and Implementation</li> <li>Safe Sleep Environment Education and Implementation</li> </ul>
	<b>Inclusive Clinical Environment</b> <ul style="list-style-type: none"> <li>Organizational Leadership Commitment</li> <li>Equitable and Inclusive Unit Policies</li> <li>Parent and Caregiver Experience Prioritization</li> </ul>	<ul style="list-style-type: none"> <li>Organizational Leadership Commitment</li> <li>Equitable and Inclusive Unit Policies</li> <li>Parent and Caregiver Experience Prioritization</li> </ul>
	<b>Parent and Caregiver Empowerment</b> <ul style="list-style-type: none"> <li>Respectful Parent and Caregiver Partnerships</li> <li>Safe Sleep Awareness</li> <li>Transition to Home, including SDOH Screening and Resource Linkage</li> </ul>	<ul style="list-style-type: none"> <li>Respectful Parent and Caregiver Partnerships</li> <li>Safe Sleep Awareness</li> <li>Transition to Home, including SDOH Screening and Resource Linkage</li> </ul>
	<b>Community Partnerships</b> <ul style="list-style-type: none"> <li>Resource Mapping</li> <li>Building Relationships with Community Organizations</li> <li>Transfer of Care to Community Providers</li> </ul>	<ul style="list-style-type: none"> <li>Resource Mapping</li> <li>Building Relationships with Community Organizations</li> <li>Transfer of Care to Community Providers</li> </ul>
	<b>Healthcare Data Utilization</b> <ul style="list-style-type: none"> <li>Collection of Accurate Race and Ethnicity Data</li> <li>Dissemination of Stratified Data</li> <li>Application of Data to Address Inequities</li> </ul>	<ul style="list-style-type: none"> <li>Collection of Accurate Race and Ethnicity Data</li> <li>Dissemination of Stratified Data</li> <li>Application of Data to Address Inequities</li> </ul>

**ESSI Bundle:**

- Awareness:** Parents or caregivers report an understanding of a safe sleep environment, including navigating challenges to safe sleep at home
- Readiness:** Transition to home, including Social Determinants of Health (SDOH) screening and linkage to appropriate resources
- Transfer of Care:** ESSI Newborn Care Plan (Awareness & Readiness) documented in the discharge

30

---

---

---

---

---

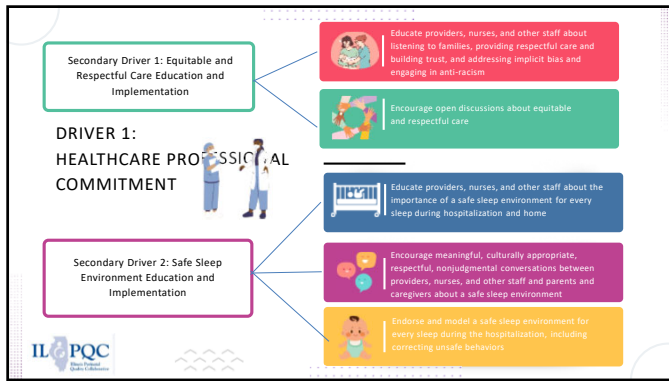
---

---

---

---

---



31

---

---

---

---

---

---

---

---

---

---



32

---

---

---

---

---

---

---

---

---

---



33

---

---

---

---

---

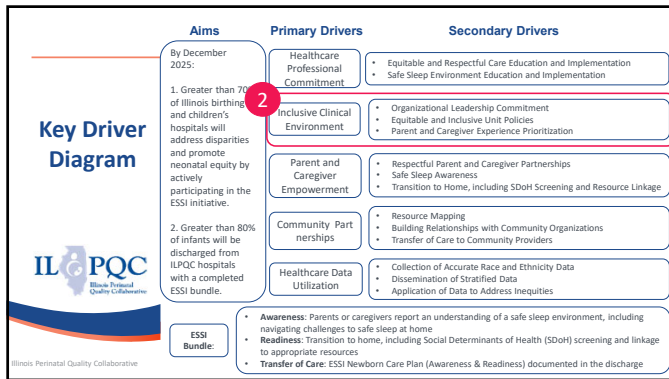
---

---

---

---

---



34

---

---

---

---

---

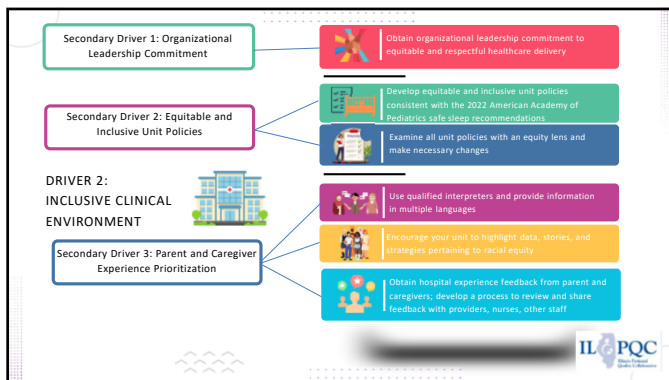
---

---

---

---

---



35

---

---

---

---

---

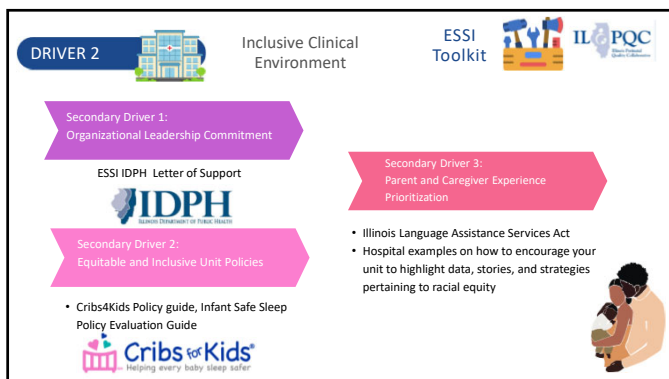
---

---

---

---

---



36

---

---

---

---

---

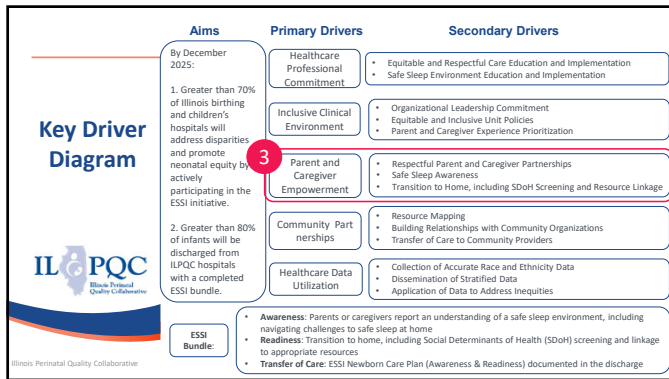
---

---

---

---

---



37

---

---

---

---

---

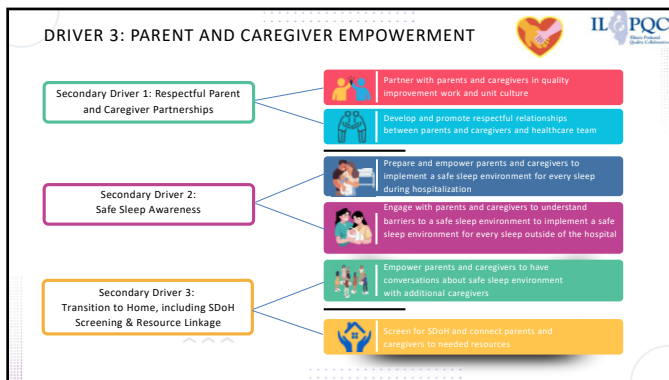
---

---

---

---

---



38

---

---

---

---

---

---

---

---

---

---



39

---

---

---

---

---

---

---

---

---

---

**DRIVER 3** Parents and Caregiver Empowerment

Secondary Driver 2: Safe sleep Awareness

National and State Resources

AAP Safe Sleep Campaign toolkit

**Keeping our babies safe by putting them safely to sleep.**

**Safe Sleep**

**NIH Safe to Sleep**

Public Education Campaign Led By  
**NIH** Eunice Kennedy Shriver National Institute of Child Health and Human Development  
 In collaboration with other organizations

ESSI Toolkit ILPQC

Illinois Safe Sleep Support

**4 ways to keep your baby safe while they sleep**

**1. ALONE**  
 Always place your baby on their back to sleep, every time.

**2. IN A CRIB**  
 Use a firm, flat mattress in a crib that meets current safety standards.

**3. ON THEIR BACK**  
 Always place your baby on their back to sleep, every time.

**4. IN A SMOKE FREE PLACE**  
 No one should smoke, drink alcohol, or use recreational drugs around your baby.

40

---

---

---

---

---

---

---

---

---

---

**DRIVER 3** Parents and Caregiver Empowerment

Secondary Driver 2: Safe sleep Awareness

Handouts and Posters

- Illinois Safe Sleep Support Poster
- Illinois Safe Sleep Support Handout
- NICHQ Myth VS Fact Safe Sleep
- NICHQ Safe Infant Sleep Baby Registry Guide
- NYSPQC Safe Sleep Baby Brochure

Videos

- Cribs for Kids Safe Sleep Videos
- Charlie's Kids Educational Videos

E-Modules

- Cribs for Kids Safe Sleep Ambassador training

Safe Sleep and Breastfeeding

- Safe infant sleep and breastfeeding support
- NICHQ Myth vs Fact Breastfeeding

Safe Sleep info for other caregivers

- NICHQ Caregiver information
- NICHQ Safe Sleep in Childcare settings

ESSI Toolkit ILPQC

NYSPQC Illinois Safe Sleep Support NICHQ Charlie's Kids Cribs for Kids American Academy of Pediatrics

41

---

---

---

---

---

---

---

---

---

---

**DRIVER 3** Parents and Caregiver Empowerment

Secondary Driver 3: Transition to Home, including SDOH Screening and Resource Linkage

**Transition to Home**

- AAP Preparing for Discharge from the NCU
- AAP Health Newborn Discharge Criteria

**SDOH Screening Tools**

- ILPQC SDOH Screening tool comparison

**Neonatal/ Family Screening Tools**

- Cribs for Kids Safe Sleep Screening Tool
- JCMH Safe Sleep Assessment Tool
- NAPSS-IIN Interview Tool: Safe Sleep Education Assessment Tool
- Bright Futures Tool and Resource Kit

**Linkage to Resources**

- ILPQC Best Practices for Linkage

ESSI Toolkit ILPQC

42

---

---

---

---

---

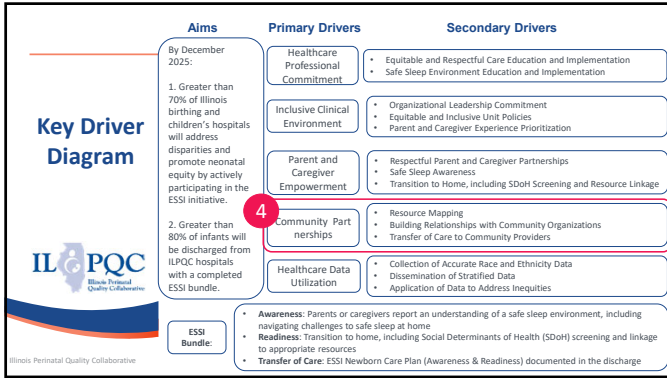
---

---

---

---

---



43

---

---

---

---

---

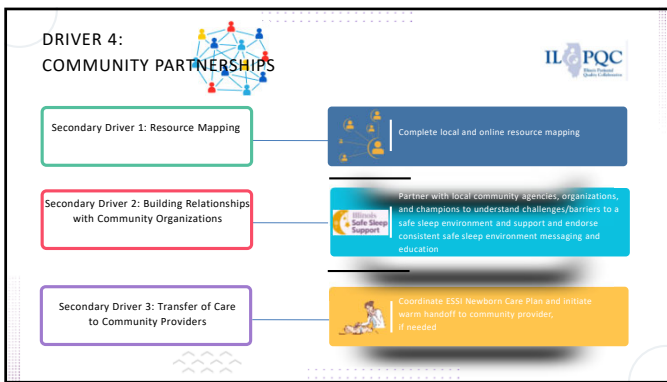
---

---

---

---

---



44

---

---

---

---

---

---

---

---

---

---



45

---

---

---

---

---

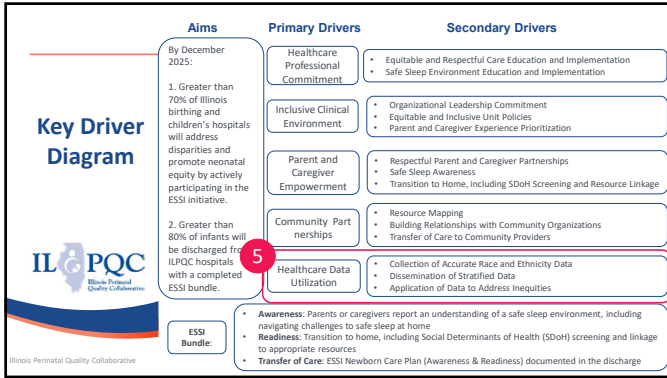
---

---

---

---

---



46

---

---

---

---

---

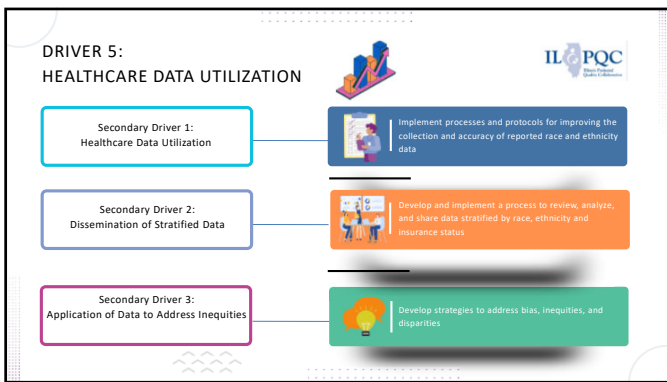
---

---

---

---

---



47

---

---

---

---

---

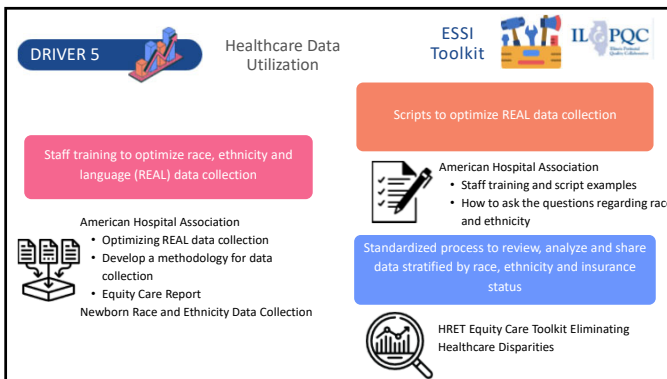
---

---

---

---

---



48

---

---

---

---

---

---

---

---

---

---





49

---

---

---

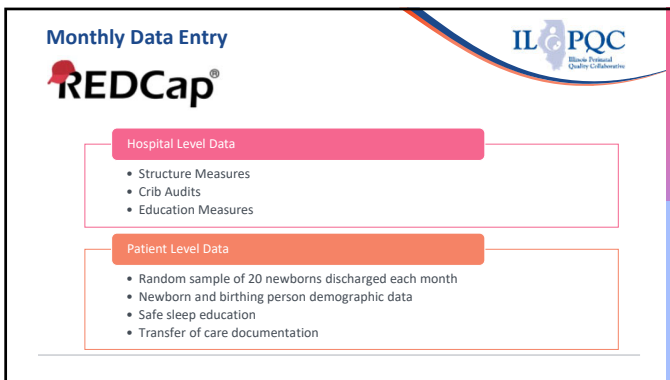
---

---

---

---

---



50

---

---

---

---

---

---

---

---



51

---

---

---

---

---

---

---

---

**Example Structure Measures**

**Hospital has standardized process....**

- To provide parents or caregivers culturally responsive safe sleep education including awareness of potential challenges, modeling, and teach back opportunities during hospitalization.
- To identify barriers to providing a safe sleep environment outside of the hospital.
- To screen for newborn inclusive Social Determinants of Health and to link to needed resources.
- For transfer of care to the newborn's community provider, including documentation of ESSI Newborn Care Plan.
- To address disparities based on review of neonatal outcomes stratified by birthing person's race, ethnicity, and insurance status.

52

---

---

---

---

---

---

---

---

---

---

**ESSI 10 Steps to Getting Started**

The Road to Success For ESSI

53

---

---

---

---

---

---

---

---

---

---

**10 STEPS TO GETTING STARTED WITH ESSI**

**1 Establish**  
 Establishing a safe sleep environment for the newborn and caregiver education.

**2 Confirm**  
 Confirming that the safe sleep environment is appropriate and that the caregiver understands the instructions.

**3 Schedule**  
 Scheduling a follow-up visit with the community provider to ensure ongoing safe sleep education and support.

**4 Review**  
 Reviewing the newborn's safe sleep outcomes and the caregiver's understanding of safe sleep practices.

**5 Complete**  
 Completing the ESSI process and documenting the newborn's safe sleep outcomes and the caregiver's understanding of safe sleep practices.

54

---

---

---

---

---

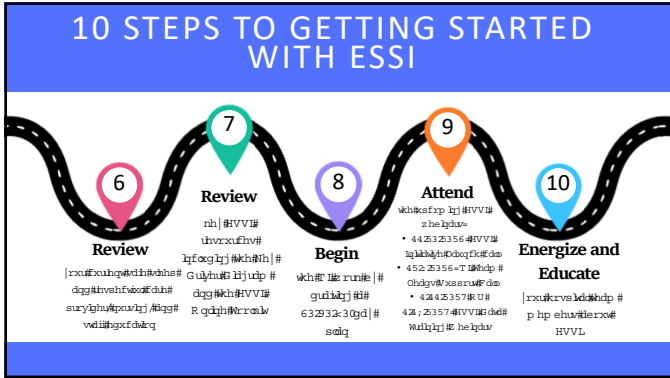
---

---

---

---

---



55

---

---

---

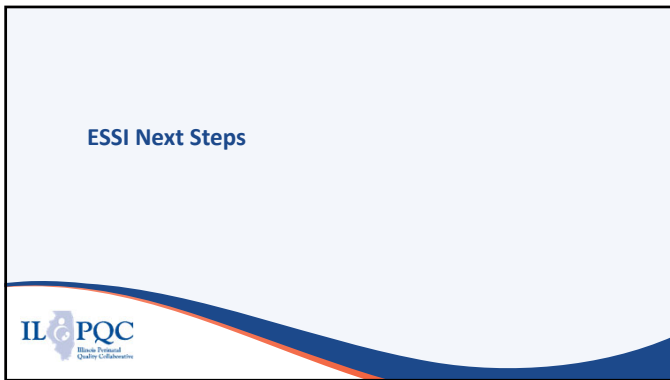
---

---

---

---

---



56

---

---

---

---

---

---

---

---



57

---

---

---

---

---

---

---

---



---

---

---

---

---

---

---

---